

# Toimitilaa Lönnrotinkatu 5, 00120 Helsinki



2. kerros



TOIMISTOTILA  
360 m<sup>2</sup>  
10 työpöytäpaikkaa  
huoneistoja ja keittiö  
sauna



## Vuokrataan

Ikoninen graniittilinna SUOMITALO sijaitsee Helsingin keskustassa vanhan kirkkopuiston laidalla. Mittavan peruskorjauksen jälkeen talosta on vuokrattavissa pääkonttoritason toimitiloja alkaen 360m<sup>2</sup>-2500m<sup>2</sup> kokoluokissa. Kerrosala on noin 1.000m<sup>2</sup>. Tutustu esitteeseen ja pohjakuviin liitetiedossa. SOITA ja SOVI ESITTELY!  
Puh: 09 7745 100.

### Tilatyypit

Toimistotilaa	360 m <sup>2</sup>
Yhteensä	360 m <sup>2</sup>

## Tilan tarjoaja

Senaatin Notariaatti Oy LKV

p. +358 9 7745 100

toimitilat@senaatinnotariaatti.fi | etunimi.sukunimi@senaatinnotariaatti.fi

<http://www.senaatinnotariaatti.fi>

## Toimitilaa Lönnrotinkatu 5, 00120 Helsinki

### Kiinteistö

Suomitalon lisärakennus oli vuonna 1937 valmistuessaan Helsingin keskustan ensimmäisiä funktionalistisia rakennuksia. Talon julkisivu on päärakennuksen tavoin päällystetty Kökarin punagraniitilla. Talo vastaanottaa vierailijansa upealla, marmorilla ja teräksellä sisustetulla hissiaulalla, joka tuo mieleen suurien pilvenpiirtäjien Art Deco-tyyliset tilat. Talon alkuperäiset, koivuviilulla verhoillut hissit ovat erityisen hienot.

Suomitalossa toimitilat ovat valoisia korkeiden ikkunoiden ansiosta. Arkkitehtuurisesti tilojen tyyli on aikakaudelle tyypillisen käytännöllinen. Toimitilat koostuvat pääsääntöisesti huone- ja monitilatoimistoista. Tiloja on modernisoitu ja saneerattu vastaamaan nykypäivän laatutasoa. Rakennuksen huoneistoala on 5215 m<sup>2</sup>.

Peruskorjatussa rakennuksessa täyttyvät ESG-vaatimukset, ympäristäsertifiointi on BREEAM Excellent.

### Sijainti

Suomitalo sijaitsee Lönnrotinkadun ja Yrjönkadun rauhallisessa kulmauksessa, vain muutaman askeleen päässä Mannerheimintien viikskeestä. Ihanteellisella paikallaan Vanhan kirkkopuiston laidalla kaupungin merkittävimmät liike-elämän palvelut ja kaupat ovat vain minuuttien kävelymatkan päässä.

### Pysäköinti

Autoilijoille alueella on tarjolla lähes 2000 hallipaikkaa ja runsaasti sähköautojen latauspisteitä.

### Palvelut

Talossa on aulapalvelu. Suositut aamiais-, lounas-, after work- ja illallispaikat löytyvät kävelyetäisyydeltä. Kesäisin myös Kalevankadun viihtyisät terassiravintolat ovat vieressä.

### Kulkuyhteydet

Raitiovaunut pysähtyvät lähellä eikä metrolle, busseille tai rautatieasemallekaan kävele viittä minuuttia pidempää.

### Tarkemmat tiedot

- ✓ Hissi
- ✓ Näkyvällä paikalla

### Rakennusvuosi

1906

### Saneerausvuosi

2026

### Kerros

2/7

Toimitilaa Lönnrotinkatu 5, 00120 Helsinki

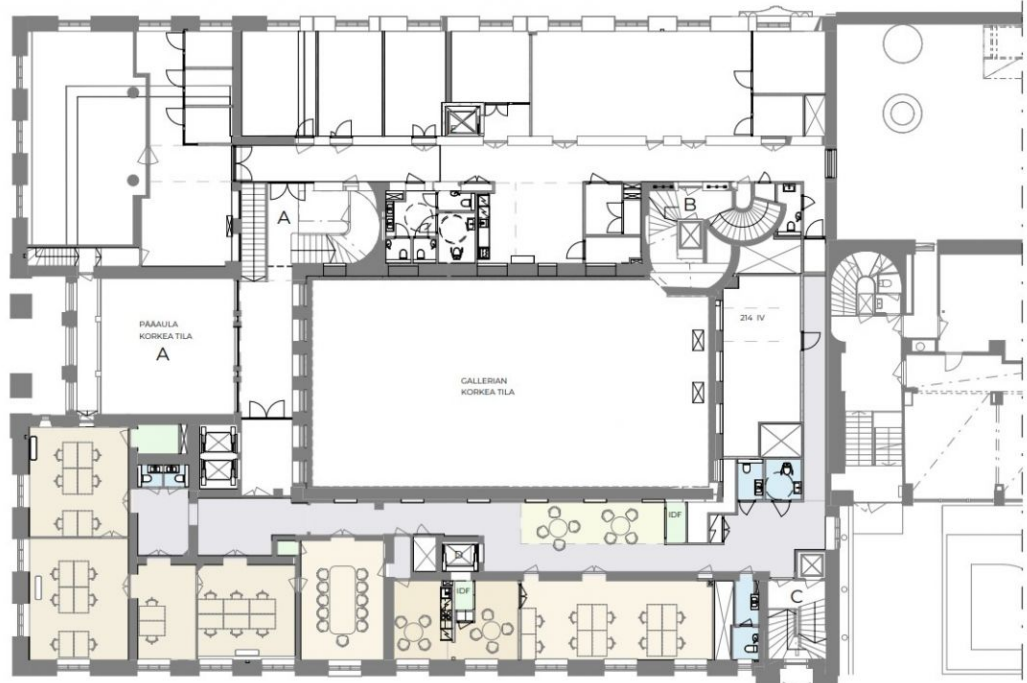


Toimitilaa Lönnrotinkatu 5, 00120 Helsinki

2. kerros

LÖNNROTINKATU 5 | KALEVANKATU 6

**TOIMISTOTILA** 360 m<sup>2</sup>  
n. 30 työpistettä  
neuvotteluhuone  
taukotila ja keittiö  
lounge



Toimitilaa Lönnrotinkatu 5, 00120 Helsinki



# SUOMITALO

LÖNNROTINKATU 5

Toimitilaa Lönnrotinkatu 5, 00120 Helsinki



## A LANDMARK FOR WHAT'S NEXT

Already a Helsinki icon, the newly renovated Suomitälo will combine your own unique style with timeless architecture, a prime location and modern building technology to meet the needs of your modern workplace.

The goal for Suomitälo is a full and premium renovation to be completed during 2028. The renovated building will provide top-quality office space designed to promote your business success and contribute actively to building a strong corporate culture.

During the renovation your wishes will determine the layout, the internal design elements and the amenities that tailor the workspace to best support your company needs and your brand. Suomitälo has space on seven floors above ground, with each floor having an area of approximately 1000 m<sup>2</sup>, making it an ideal new headquarters for your company.

The Atrium blends modern functionality with warm aesthetics providing the ideal space for training sessions, seminars or events such as a company-wide brunch.

Toimitilaa Lönnrotinkatu 5, 00120 Helsinki



## AT THE CENTER OF EVERYTHING

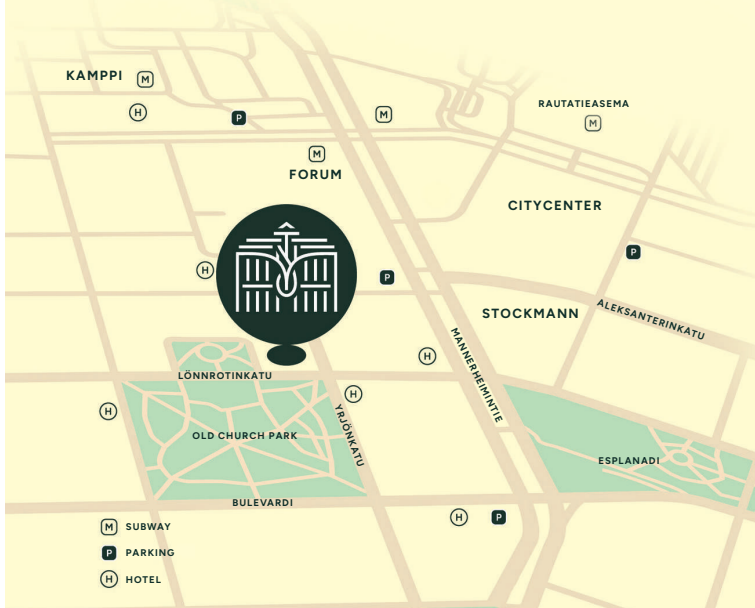
Just a few steps away from the traffic noise and bustle of Mannerheimintie, Suomitalo is peacefully located at the corner of Lönnrotinkatu and Yrjönkatu. With its idyllic situation at the edge of the Old Church Park, the city's premium business and retail destinations are within a minute's walk.

## Toimitilaa Lönnrotinkatu 5, 00120 Helsinki

Trams stop close by, and the metro, main train and bus stations are in the immediate vicinity. For those driving, there are almost 2,000 heated parking spaces and plenty of charging points for electric cars within 100 meters of Suomitalo.

Popular breakfast, lunch, afterwork and dinner spots can be found within walking distance. In the summer, the alfresco Kalevankatu restaurant terraces are also nearby.

Hotel St. George with its acclaimed bakery, as well as Hotel Tori and its Ateljee Bar with stunning views across the city rooftops, are next door. In total there are over a thousand quality hotel rooms within a 100 m walk from the front door.



Toimitilaa Lönnrotinkatu 5, 00120 Helsinki

# PERFORM LIKE HEADQUARTERS FEEL LIKE HOME

In the era of home-office - in which remote work has become the norm, Suomitilo redefines the workplace by creating the office-home. A place where work efficiency is combined with the comfortable atmosphere and human scale of a home.

Designed to build a strong sense of belonging, Suomitilo will offer amenities and experiences, defined by you, that upgrade the daily work life of all your employees.

From state-of-the-art meeting rooms, welcoming lounges for socializing, a year-round winter-garden style atrium, roof terrace, gym facilities and much more, Suomitilo encourages meaningful connections within and beyond its walls.

Every floor of Suomitilo will be planned to reflect your distinct identity. Tailored designs allow you to project your culture, creating a workplace that strengthens team pride and professional ambition.



ILLUSTRATION

Toimitilaa Lönnrotinkatu 5, 00120 Helsinki



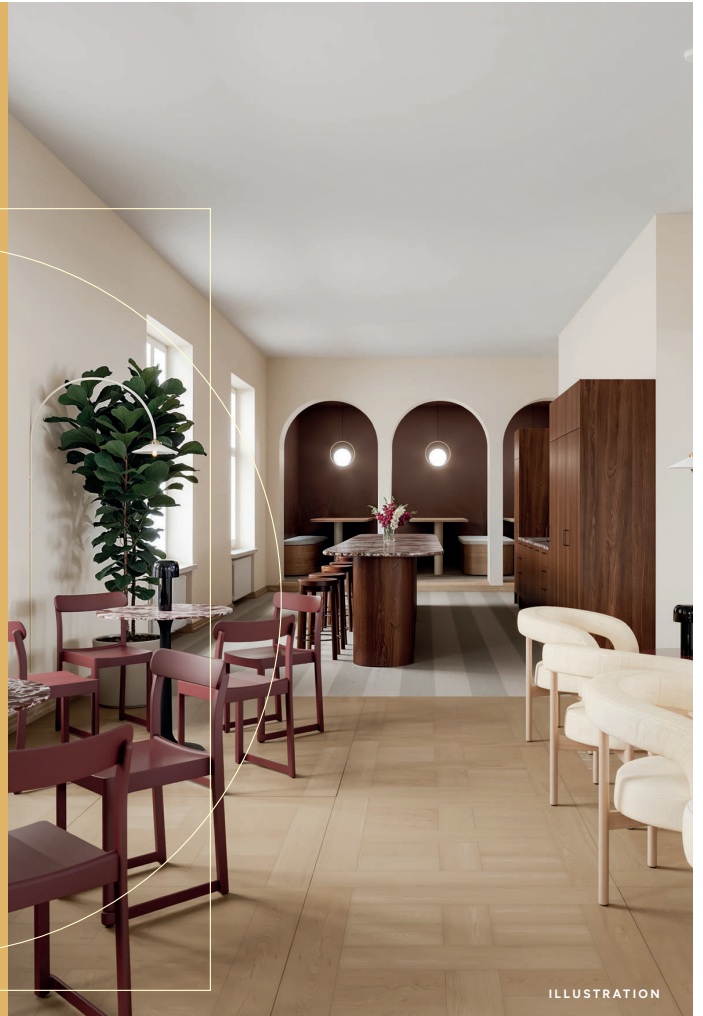
Toimitilaa Lönnrotinkatu 5, 00120 Helsinki

# WELCOME TO THE OFFICE-HOME

The newly renovated Suomitalo will offer a comprehensive range of services and facilities to support the Office-Home concept.

- Premium lobby services
- A glassed-in atrium that creates a year round common space for relaxation, socializing and events
- Meeting rooms
- Lounges
- Roof-top terrace for sunny moments of work or relaxation
- Gym, Sauna, showers & locker rooms
- Secure bicycle storage

A Helsinki icon transformed into a hub for modern work, Suomitalo combines historic charm with forward-thinking design. It creates an environment that respects tradition while embracing the future of corporate culture.



ILLUSTRATION

Toimitilaa Lönnrotinkatu 5, 00120 Helsinki



Toimitilaa Lönnrotinkatu 5, 00120 Helsinki

# A SUSTAINABLE SOLUTION

The renovation and update of an otherwise sound property in a heritage location is always preferable to demolition and rebuild in terms of history, emotion and sustainability.

On a technical level the renovation will feature among other things

- BREEAM Excellent certification demonstrates that ESG requirements have taken into consideration in all design aspects.
- Readiness for WELL and WiredScore Gold or Platinum certifications indicates the high quality and sustainability of the project and design.
- Superior interior finishes that complement the building's history
- A renewed, automated air conditioning system ensures good indoor air and high energy efficiency
- Adjustable air temperatures and cooling connected to energy efficient district cooling
- Good accessibility with elevators in three locations
- Flexible, innovative lighting system
- New IT infrastructure meets the requirements of modern office work

Suomitalo redefines the workplace with thoughtfully designed amenity spaces that encourage collaboration.

The green atrium sits at the heart of Suomitalo connecting different parts of the workplace.



Toimitilaa Lönnrotinkatu 5, 00120 Helsinki



Toimitilaa Lönnrotinkatu 5, 00120 Helsinki



**1908**

Suomi Mutual Life Insurance Company purchases the corner plot on Lönnrotinkatu. The floor plans are commissioned from architect Onni Tarjanne.

**1909**

Architect Armas Lindgren's proposal wins the design competition for the facade of the new headquarters of Suomi Mutual Life Insurance Company.

**1911**

Lönnrotinkatu 5 is completed and the headquarters staff of Suomi Mutual Life Insurance Company move into the building.

**1919**

Due to lack of space, the residential apartments in the building are converted to office use.

**1937**

Architect office Hytönen & Luukkonen wins the design competition for the extension of the Suomi Mutual Life Insurance Company building.

**1938**

The extension of the headquarters building at Kalevankatu 6 is completed. The Elysée cinema opens in the building.

**1960**

The residential apartments in the new building are also converted into office space.

**1970**

After 33 years at Kalevankatu 6, the Elysée cinema moves out of the basement of Suomenitalo to new premises in Kurvi.

**2005**

Suomi-yhtiö moves to new premises on Aleksanterinkatu.

**2028**

New tenants move into the completely renovated Suomenitalo to begin a new chapter in its history.

Suomitalo was built for the Suomi Mutual Life Insurance Company in 1911. The facades and floor plans of Suomenitalo were designed by the renowned architects Armas Lindgren and Onni Tarjanne respectively. Lindgren's facades were based on the basic format of a classic Italian Renaissance Palace. The main facade's central sculpture was a mother-child theme surrounded by a natural cornucopia. Lindgren's daughters sat as models for sculptor Emil Halonen.

Red granite from Kökar was used for the facade, and the palace-like appearance of the building was particularly admired. In addition to offices, residential apartments were also located on the top floors of the building however these were quickly put into office use due to lack of space.

Armas Lindgren also designed the boardroom, the director's room, furniture and interior design. The impressive bronze

front door of Suomenitalo was designed by the leading decorative artist of the time, Eric O.W. Ehrström.

Suomitalo is also home to Galerie Forsblom which holds a unique position on the Nordic art scene as one of the largest and most international contemporary art galleries, bringing international established artists to its exhibition space in Helsinki. Later in 2025 Suomenitalo will host, as main venue, the annual Helsinki Design Week festival.

Toimitilaa Lönnrotinkatu 5, 00120 Helsinki



Toimitilaa Lönnrotinkatu 5, 00120 Helsinki



YOUR CONTACTS

JUSSI KIVITIE  
+358 50 420 1146  
jussi.kivitie@newsec.fi



NIKO PENTTINEN  
+358 50 319 4882  
niko.penttinen@cbre.com

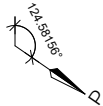
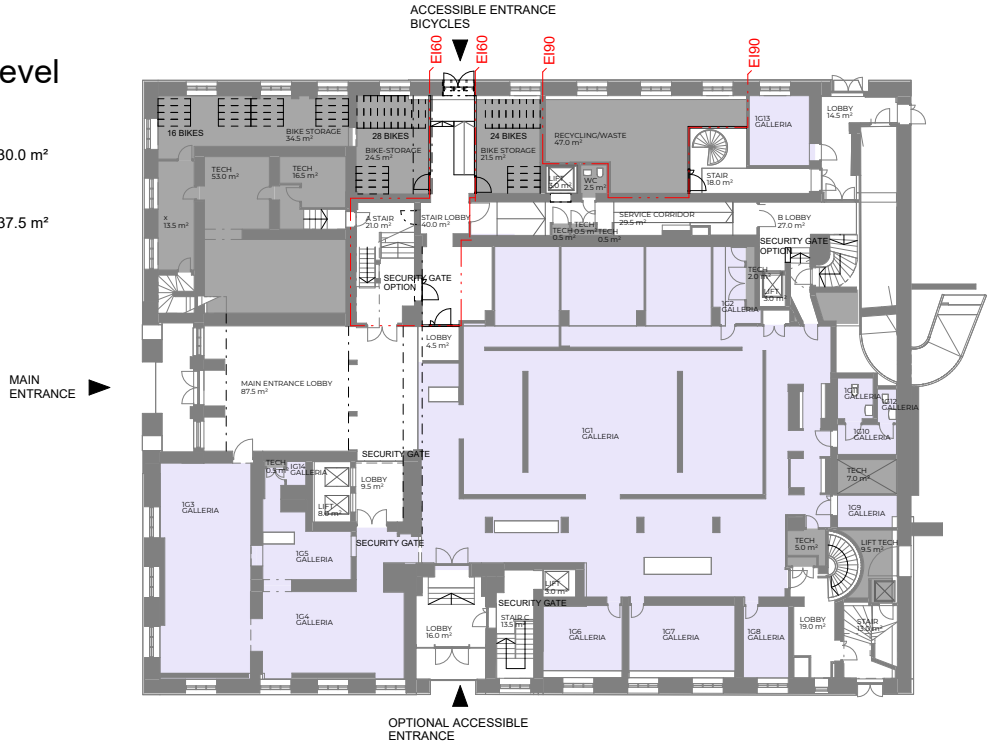
**CBRE**

suomitalo.fi

Toimitilaa Lönnrotinkatu 5, 00120 Helsinki

1st Floor Ground level

1st Floor	Stairs Lifts Lobbies PER FLOOR	330.0 m <sup>2</sup>
1st Floor	Building services/ technical TOTAL PER FLOOR	237.5 m <sup>2</sup>





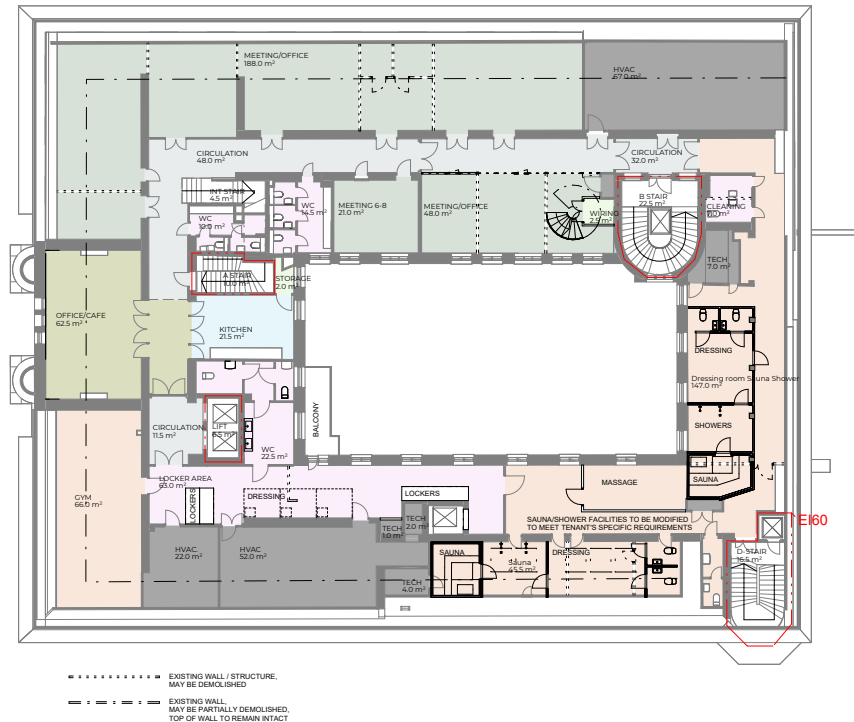


## Toimitilaa Lönnrotinkatu 5, 00120 Helsinki

### 6th Floor

6th Floor	Leased area TOTAL PER FLOOR	559.0 m <sup>2</sup>
6th Floor	Other Leased spaces TOTAL PER FLOOR	258.5 m <sup>2</sup>
6th Floor	Stairs Lifts Lobbies PER FLOOR	55.5 m <sup>2</sup>
6th Floor	Building services/ technical TOTAL PER FLOOR	156.5 m <sup>2</sup>

OFFICE SPACE	62.5 m <sup>2</sup>
OFFICE SPACE SUITABLE FOR MEETING ROOM SPACE	
OFFICE SPACE / PHONE BOOTH	
OFFICE SPACE / SOCIAL SPACE	
OFFICE SPACE CIRCULATION	
WC SPACES	
KITCHEN	
6TH FLOOR SAUNA / GYM	
STORAGE / TENANT WIRING CLOSET	
TECH SPACES / SHAFTS	



Toimitilaa Lönnrotinkatu 5, 00120 Helsinki

7th Floor

7th Floor OFFICE 99.5 m<sup>2</sup>

7th Floor Stairs Lifts Lobbies  
PER FLOOR 8.0 m<sup>2</sup>

- OFFICE SPACE
- OFFICE SPACE SUITABLE FOR MEETING ROOM SPACE
- OFFICE SPACE / PHONE BOOTH
- OFFICE SPACE / SOCIAL SPACE
- OFFICE SPACE CIRCULATION
- WC SPACES
- KITCHEN
- 6TH FLOOR SAUNA / GYM
- STORAGE / TENANT WIRING CLOSET
- TECH SPACES / SHAFTS

